



**Cornerstone Academy Trust**

**Westclyst Community Primary School**



**WHOLE SCHOOL SAFEGUARDING AND  
CHILD PROTECTION POLICY**

# **CORNERSTONE MULTI ACADEMY TRUST**

## **WHOLE SCHOOL SAFEGUARDING AND CHILD PROTECTION POLICY**

This policy is available on the Academy Trust website, included in the staff handbook and a hard copy available from the school office.

### **1. Policy statement and principals**

This policy is one of a series in the trust's integrated safeguarding policies and must be read in conjunction with the other policies for fuller guidance and expectations for example, code of conduct, managing allegations and acceptable use policies.

Our core safeguarding principles are:

- the trust's responsibility to safeguard and promote the welfare of children is of paramount importance
- safer children make more successful learners
- staff and trustees will be involved in policy development and review
- policies will be reviewed at least annually unless an incident or new legislation or guidance suggests the need for an interim review.

### **Child protection statement**

We recognise our moral and statutory responsibility to safeguard and promote the welfare of all pupils. We endeavour to provide a safe and welcoming environment where children are respected and valued. We are alert to the signs of abuse and neglect and follow our procedures to ensure that children receive effective support, protection and justice.

The procedures contained in this policy apply to all staff and trustees.

### **Policy principles**

- Welfare of the child is paramount
- All children, regardless of age, gender, ability, culture, race, language, religion or sexual identity, have equal rights to protection
- All staff have an equal responsibility to act on any suspicion or disclosure that may suggest a child is at risk of harm
- Pupils and staff involved in child protection issues will receive appropriate support

### **Policy Aims**

- Safeguarding incidents and/or behaviours can be associated with factors outside the school or college and/or can occur between children outside the school or college. All staff, but especially the designated safeguarding lead (or deputy) should be considering the context within which such incidents and/or behaviours occur. This is known as contextual safeguarding, which simply means assessments of children should consider whether wider environmental factors are present in a child's life that are a threat to their safety and/or welfare.
- To demonstrate the school's commitment with regard to safeguarding and child protection to pupils, parents and other partners.
- To support the child's development in ways that will foster security, confidence and independence.

- To provide an environment in which children and young people feel safe, secure, valued and respected, and feel confident to, and know how to approach adults if they are in difficulties, believing they will be effectively listened to.
- To raise the awareness of all teaching and non-teaching staff of the need to safeguard children and of their responsibilities in identifying and reporting possible cases of abuse.
- To provide a systematic means of monitoring children known or thought to be at risk of harm, and ensure we, the school, contribute to assessments of need and support packages for those children.
- To emphasise the need for good levels of communication between all members of staff.
- To develop a structured procedure within the school which will be followed by all members of the school community in cases of suspected abuse.
- To develop and promote effective working relationships with other agencies, especially the Police and MASH.
- To ensure that all staff working within our school who have substantial access to children have been checked as to their suitability, including verification of their identity, qualifications, and a satisfactory DBS check (according to guidance)<sup>1</sup>, and a single central record is kept for audit.

### **Terminology**

**Safeguarding** and promoting the welfare of children refers to the process of protecting children from abuse or neglect, preventing the impairment of health or development, ensuring that children grow up in circumstances consistent with the provision of safe and effective care and undertaking that role so as to enable those children to have optimum life chances and to enter adulthood successfully.

**Child protection** refers to the processes undertaken to protect children who have been identified as suffering, or being at risk of suffering significant harm.

**Staff** refers to all those working for or on behalf of the school, full time or part time, in either a paid or voluntary capacity.

**Child** refers to all young people who have not yet reached their 18th birthday.

**DSL** refers to the designated safeguarding lead at the school

**Parent** refers to birth parents and other adults who are in a parenting role, for example step-parents, foster carers and adoptive parents.

## **Safeguarding Legislation & Guidance**

The following safeguarding legislation and guidance has been considered when drafting this policy:

- Section 175 of the Education Act 2002 (maintained schools only)
- Section 157 of the Education Act 2002 (Independent schools only, including academies and CTCs)
- The Education (Independent Schools Standards) (England) Regulations 2003 (Independent schools only, including academies and CTCs)
- The Safeguarding Vulnerable Groups Act 2006
- The Teacher Standards 2012

<sup>1</sup> Guidance regarding DBS checks recently updated by the Protection of Freedoms Act 2012

- Working Together to Safeguarding Children 2015
- Keeping Children Safe in Education 2020
- What to do if you're worried a child is being abused 2015

## Roles and responsibilities

Key personnel	
The senior designated officer for child protection is:	Nina Rothery
Email: <a href="mailto:nina.rothery@tcat.education">nina.rothery@tcat.education</a>	Tel: 01392 463878
The deputy designated person is:	Anthony Lees
Email: <a href="mailto:anthony.lees@tcat.education">anthony.lees@tcat.education</a>	Tel: 01392 304040
The deputy designated person is:	Emily Daniels
Email: <a href="mailto:emily.daniels@tcat.education">emily.daniels@tcat.education</a>	Tel: 01392 304040
The nominated child protection trustee is:	Ken Dyson
Email: <a href="mailto:ken.dyson@tcat.education">ken.dyson@tcat.education</a>	Tel: 01392 304040
The CEO is:	Jonathan Bishop
Email: <a href="mailto:jonathan.bishop@tcat.education">jonathan.bishop@tcat.education</a>	Tel: 01392 796396

## Executive Summary of changes November 2020

Reference to Keeping Children Safe in Education 2019 replaced by KCSiE 2020 throughout	
P.11 Para 8	Under, <b>Child Protection Procedures:</b> Replaced existing definition of Child Sexual Exploitation (CSE) with that provided in KCSiE 2020.
P.11 Para 8	Added definition of Child Criminal Exploitation (CCE) provided by KCSiE 2020
P.17 Para 8	Added new paragraphs for children Mental Health provided by KCSiE 2020
Appendix 3	Added further information provided in Annex A of KCSiE 2020 for CSE and CCE including indicators

### Supporting Children

- We recognise that a child who is abused or witnesses violence may feel helpless, humiliated, may blame themselves, and find it difficult to develop and maintain a sense of self-worth.
- We recognise that the school may provide the only stability in the lives of children who have been abused or who are at risk of harm.
- We accept that research shows that the behaviour of a child in these circumstances may range from that which is perceived to be normal to aggressive or withdrawn.

Our school will support all children by:

- Encouraging self-esteem and self-assertiveness, through the curriculum as well as our relationships, whilst not condoning aggression or bullying.
- Promoting a caring, safe and positive environment within the school.
- Responding sympathetically to any requests for time out to deal with distress and anxiety.
- Offering details of helplines, counselling or other avenues of external support.
- Liaising and working together with all other support services and those agencies involved in the safeguarding of children.
- Notifying MASH as soon as there is a significant concern.
- Providing continuing support to a child about whom there have been concerns who leaves the school by ensuring that appropriate information is copied under confidential cover to the child's new setting and ensuring the school medical records are forwarded as a matter of priority.
- Children are taught to understand and manage risk through our person, social, health and economic (PHSE) education and Relationship and Sex Education and through all aspects of school life. This includes online safety.

### Prevention / Protection

- We recognise that the school plays a significant part in the prevention of harm to our children by providing children with good lines of communication with trusted adults, supportive friends and an ethos of protection.

### The school community will therefore:

- Work to establish and maintain an ethos where children feel secure, are encouraged to talk and are always listened to.

- Include regular consultation with children e.g. through safety questionnaires, participation in anti-bullying week, asking children to report whether they have had happy/sad lunchtimes/playtimes
- Ensure that all children know there is an adult in the school whom they can approach if they are worried or in difficulty.
- Include safeguarding across the curriculum, including PSE, opportunities which equip children with the skills they need to stay safe from harm and to know to whom they should turn for help. In particular this will include anti-bullying work, online-safety, road safety, pedestrian and cycle training. Also focussed work in Year 6 to prepare for transition to Secondary school and more personal safety/independent travel.
- Ensure all staff are aware of school guidance for their use of mobile technology and have discussed safeguarding issues around the use of mobile technologies and their associated risks.

## 5. **Safe School, Safe Staff**

We will ensure that;

- All staff and volunteers read KCSiE Part 1 and Annex A annually and sign to say they read and understood it.
- All staff receive information about the school's safeguarding arrangements, the school's safeguarding statement, staff behaviour policy (code of conduct)<sup>2</sup>, child protection policy, behaviour policy, the safeguarding response to children who go missing from education, the role and names of the Designated Safeguarding Lead and their deputy(ies), and sign to say they have read it.
- All staff receive safeguarding and child protection training, including online safety, at induction in line with advice from Devon Children and Families Partnership which is regularly updated (for example, via email, e-bulletins and staff meetings), as required, but at least annually;
- All members of staff are trained in and receive regular updates in online safety and reporting concerns;
- All staff and Trustees have regular Level 2 child protection awareness training, updated by the DSL as appropriate, to maintain their understanding of the signs and indicators of abuse;
- The child protection policy is made available via the school website or other means and that parents/carers are made aware of this policy and their entitlement to have a copy via the school handbook/newsletter/website. All parents/carers are made aware of the responsibilities of staff members regarding child protection procedures through the publication of the Child Protection Policy and reference to it in the school's handbook.
- The school provides a coordinated offer of Early Help when additional needs of children are identified and contributes to Early Help arrangements and inter-agency working and plans;
- Our lettings policy will seek to ensure the suitability of adults working with children on school sites at any time;
- Community users organising activities for children are aware of the school's Child Protection Policy, guidelines and procedures;
- The name of the designated members of staff for child protection, the Designated Safeguarding Lead and deputy(ies), are clearly advertised in the school with a statement explaining the school's role in referring and monitoring cases of suspected abuse;

---

<sup>2</sup> The code of conduct should include acceptable use of technology, staff & pupil relationship boundaries and communications, including the use of social media.

- All Governors will be given a copy of Part 2 and Annex A of Keeping Children Safe in Education 2020.

## 6. **Roles and Responsibilities**

- All members of The Trustee Board understand and fulfil their responsibilities, namely to ensure that there is a Child Protection and Safeguarding policy together with a staff behaviour policy (code of conduct);
- child protection, safeguarding, recruitment and managing allegations policies and procedures, including the staff behaviour policy (code of conduct), are consistent with Devon Children and Families Partnership and statutory requirements, are reviewed annually and that the Child Protection policy is publicly available on the school website or by other means;
- ensures that all staff including temporary staff and volunteers are provided with the school's child protection policy and staff Code of Conduct;
- all staff have read Keeping Children Safe in Education (2020) Part 1 and Annex A and that mechanisms are in place to assist staff in understanding and discharging their roles and responsibilities as set out in the guidance.
- the school operates a safer recruitment procedure that includes statutory checks on staff suitability to work with children and disqualification by association regulations and by ensuring that there is at least one person on every recruitment panel who has completed safer recruitment training;
- the school has procedures for dealing with allegations of abuse against staff (including the headteacher), volunteers and against other children and that a referral is made to the DBS if a person in regulated activity has been dismissed or removed due to safeguarding concerns or would have had they not resigned.
- a member of the Governing Body/Board, usually the Chair, is nominated to liaise with the LA on Child Protection issues and in the event of an allegation of abuse made against the Headteacher
- a member of the senior leadership team has been appointed as the Designated Safeguarding Lead (DSL) by the Governing Body who will take lead responsibility for safeguarding and child protection and that the role is explicit in the role holder's job description;
- on appointment, the DSL and deputy(ies) undertake appropriate identified training offered by DCFP or other provider every two years;
- all other staff have safeguarding training updated as appropriate;
- at least one member of the governing body has completed safer recruitment training to be repeated every five years.
- children are taught about safeguarding (including online safety) as part of a broad and balanced curriculum covering relevant issues through personal social health and economic education (PSHE) and/or for maintained schools through relationship and sex education (RSE);
- appropriate safeguarding responses are in place for children who go missing from education, particularly on repeat occasions, to help identify the risk of abuse and neglect including sexual abuse or exploitation and to help prevent the risks of their going missing in future;
- appropriate online filtering and monitoring systems are in place;
- enhanced DBS checks (without barred list checks, unless the governor is also a volunteer at the school) are in place for all Governors;
- any weaknesses in Child Protection are remedied immediately;

**The Headteacher will ensure that;**

- the Child Protection and Safeguarding Policy and procedures are implemented and followed by all staff;
- sufficient time, training, support, resources, including cover arrangements where necessary, is allocated to the DSL and deputy(ies) DSL(s) to carry out their roles effectively, including the assessment of pupils and attendance at strategy discussions and other necessary meetings;
- where there is a safeguarding concern that the child's wishes and feelings are taken into account when determining what action to take and what services to provide;
- systems are in place for children to express their views and give feedback which operate with the best interest of the child at heart;
- all staff feel able to raise concerns about poor or unsafe practice and that such concerns are handled sensitively and in accordance with the whistle-blowing procedures;
- that pupils are provided with opportunities throughout the curriculum to learn about safeguarding, including keeping themselves safe online;
- they liaise with the Local Authority Designated Officer (LADO), before taking any action and on an ongoing basis, where an allegation is made against a member of staff or volunteer;
- anyone who has harmed or may pose a risk to a child is referred to the Disclosure and Barring Service.

### **The Designated Safeguarding Lead;**

- holds ultimate responsibility for safeguarding and child protection in the school and is a member of the SLT;
- acts as a source of support and expertise in carrying out safeguarding duties for the whole school community;
- encourages a culture of listening to children and taking account of their wishes and feelings;
- is appropriately trained with updates every two years and will refresh their knowledge and skills at regular intervals but at least annually;
- will refer a child if there are concerns about possible abuse, to the MASH<sup>3</sup>, and act as a focal point for staff to discuss concerns. Enquiries<sup>4</sup> must be followed up in writing, if referred by telephone;
- will keep detailed, accurate records, either written or using appropriate online software, of all concerns about a child even if there is no need to make an immediate referral;
- will ensure that all such records are kept confidential, stored securely and are separate from pupil records, until the child's 25th birthday;
- will ensure that an indication of the existence of the additional file is marked on the pupil records;
- will ensure that when a pupil leaves the school, relevant child protection information is passed to the new school (separately from the main pupil file) as soon as possible, ensuring secure transit and that confirmation of receipt is obtained;
- in addition to the child protection file, the designated safeguarding lead should also consider if it would be appropriate to share any information with the new school or college in advance of a child leaving. For example, information that would allow the new school or college to continue supporting victims of abuse and have that support in place for when the child arrives.
- will liaise with the Local Authority and work with other agencies and professionals in line with Working Together to Safeguard Children;
- has a working knowledge of DCFP procedures;

---

<sup>3</sup> All new enquiries go to the MASH, DSLs can consult on 0345 155 1071. In an emergency out of hours referrals can be made to the Emergency Duty Team on 0845 6000 388 or Police.

<sup>4</sup> Online forms are available via [Devon County Council](#) or [DCFP](#).



- will ensure that either they, or another staff member, attend case conferences, core groups, or other multi-agency planning meetings, contribute to assessments, and provide a report where required which has been shared with the parents;
- will ensure that any pupil currently with a child protection plan who is absent in the educational setting without explanation for two days is referred to their social worker;
- will ensure that all staff sign to say they have read, understood and agree to work within the School's child protection policy, behaviour policy, staff Code of conduct and Keeping Children Safe in Education Part 1 and Annex A and ensure that the policies are used appropriately;
- will organise child protection and safeguarding induction, regularly updated training and a minimum of annual updates (including online safety) for all school staff, keep a record of attendance and address any absences;
- will contribute to and provide, with the Headteacher and Chair of Governors, the "Audit of Statutory Duties and Associated Responsibilities" (S175/157 audit) to be submitted annually to the Education Safeguarding Team working on behalf of Devon County Council;
- understands locally agreed processes for providing early help and intervention and will support members of staff where Early Help is appropriate;
- will ensure that the name of the designated members of staff for Child Protection, the Designated Safeguarding Lead and deputies, are clearly advertised in the school, with a statement explaining the school's role in referring and monitoring cases of suspected abuse.

### **The Deputy Designated Safeguarding Lead(s)**

- Is/are trained to the same standard as the Designated Safeguarding Lead and, in the absence of the DSL, carries out those functions necessary to ensure the ongoing safety and protection of pupils. In the event of the long-term absence of the DSL the deputy will assume all the functions above.

### **All School Staff**

- Understand that it is everyone's responsibility to safeguard and promote the welfare of children and that they have a role to play in identifying concerns, sharing information and taking prompt action;
- Consider, at all times, what is in the best interests of the child;
- Know how to respond to a pupil who discloses abuse through delivery of 'Working together to Safeguard Children', and 'What to do if you're worried a child is being abused';
- Will refer any safeguarding or child protection concerns to the DSL or if necessary where the child is at immediate risk to the police or MASH;
- Are aware of the Early Help<sup>5</sup> process and understand their role within it including identifying emerging problems for children who may benefit from an offer of Early Help, liaising with the DSL in the first instance and supporting other agencies and professionals in an Early Help assessment through information sharing. In some cases staff may act as the Lead Professional in Early Help Cases.
- Will provide a safe environment in which children can learn;

### **7. Confidentiality**

- Westclyst Community Primary School recognises that in order to effectively meet a child's needs, safeguard their welfare and protect them from harm the school must contribute to inter-agency working in line with Working Together to Safeguard Children (2018) and share information between professionals and agencies where there are concerns.

---

<sup>5</sup> Detailed information on early help can be found in Chapter 1 of [Working Together to safeguard children](#)

- All staff must be aware that they have a professional responsibility to share information with other agencies in order to safeguard children and that the Data Protection Act 2018<sup>6</sup> is not a barrier to sharing information where the failure to do so would place a child at risk of harm.
- All staff must be aware that they cannot promise a child to keep secrets which might compromise the child's safety or wellbeing.
- However, we also recognise that all matters relating to child protection are personal to children and families. Therefore, in this respect they are confidential and the Headteacher or DSLs will only disclose information about a child to other members of staff on a need to know basis.
- We will always undertake to share our intention to refer a child to MASH with their parents /carers unless to do so could put the child at greater risk of harm or impede a criminal investigation. If in doubt, we will contact the MASH consultation line.

## 8. **Child Protection Procedures**

- Abuse and neglect are forms of maltreatment of a child. Somebody may abuse or neglect a child by inflicting harm or by failing to act to prevent harm. Children may be abused in the family or in an institutional or community setting by those known to them or, more rarely, by others (e.g. via the internet). They may be abused by an adult or adults or by another child or children.
- Further information about the four categories of abuse; physical, emotional, sexual and neglect, and indicators that a child may be being abused can be found in appendices 1 and 2.
- Any child in any family in any school could become a victim of abuse. Staff should always maintain an attitude of "It could happen here".
- There are also a number of specific safeguarding concerns that we recognise our pupils may experience;
  - child missing from education
  - child missing from home or care
  - child sexual exploitation (CSE)
  - bullying including cyberbullying
  - domestic abuse
  - drugs
  - fabricated or induced illness
  - faith abuse
  - female genital mutilation (FGM)
  - forced marriage
  - gangs and youth violence
  - gender-based violence/violence against women and girls (VAWG)
  - mental health
  - private fostering
  - radicalisation
  - youth produced sexual imagery (sexting)
  - teenage relationship abuse
  - trafficking
  - peer on peer abuse

Staff are aware that behaviours linked to drug taking, alcohol abuse, truanting and sexting put children in danger and that safeguarding issues can manifest themselves via peer on peer abuse.

---

<sup>6</sup> The UK Data Protection Act 2018 (DPA 2018) is supplementary to the General Data Protection Regulation 2016 (the GDPR) and replaces DPA 1998.

We also recognise that abuse, neglect and safeguarding issues are complex and are rarely standalone events that can be covered by one definition or label. Staff are aware that in most cases multiple issues will overlap one another.

### **If staff are concerned about a child's welfare**

- If staff notice any indicators of abuse/neglect or signs that a child may be experiencing a safeguarding issue they should record and speak immediately to a designated officer and record the concerns on CPOMS.
- There will be occasions when staff may suspect that a pupil may be at risk but have no 'real' evidence. The pupil's behaviour may have changed, their artwork could be bizarre, they may write stories or poetry that reveal confusion or distress, or physical or inconclusive signs may have been noticed.
- Westclyst Community Primary School recognise that the signs may be due to a variety of factors, for example, a parent has moved out, a pet has died, a grandparent is very ill or an accident has occurred. However, they may also indicate a child is being abused or is in need of safeguarding.
- In these circumstances staff will try to give the child the opportunity to talk. It is fine for staff to ask the pupil if they are OK or if they can help in any way.
- Following an initial conversation with the pupil, if the member of staff remains concerned they should discuss their concerns with the DSL and put them in writing.
- If the pupil does begin to reveal that they are being harmed, staff should follow the advice below regarding a pupil making a disclosure.

### **If a pupil discloses to a member of staff**

- We recognise that it takes a lot of courage for a child to disclose they are being abused. They may feel ashamed, guilty or scared, their abuser may have threatened that something will happen if they tell, they may have lost all trust in adults or believe that what has happened is their fault. Sometimes they may not be aware that what is happening is abuse.
- A child who makes a disclosure may have to tell their story on a number of subsequent occasions to the police and/or social workers. Therefore, it is vital that their first experience of talking to a trusted adult is a positive one.

### **During their conversation with the pupil staff will;**

- Listen to what the child has to say and allow them to speak freely
- Remain calm and not overreact or act shocked or disgusted – the pupil may stop talking if they feel they are upsetting the listener
- Reassure the child that it is not their fault and that they have done the right thing in telling someone
- Not be afraid of silences – staff must remember how difficult it is for the pupil and allow them time to talk
- Take what the child is disclosing seriously
- Ask open questions and avoid asking leading questions
- Avoid jumping to conclusions, speculation or make accusations
- Not automatically offer any physical touch as comfort. It may be anything but comforting to a child who is being abused.
- Avoid admonishing the child for not disclosing sooner. Saying things such as 'I do wish you had told me about it when it started' may be the staff member's way of being supportive but may be interpreted by the child to mean they have done something wrong.
- Tell the child what will happen next.

If a pupil talks to any member of staff about any risks to their safety or wellbeing the staff member will let the child know that they will have to pass the information on – staff are not allowed to keep secrets.

The member of staff should write up their conversation as soon as possible on the Expression of Concern form in the child's own words. Staff should make this a matter of priority. The record should be signed and dated, the member of staff's name should be printed and it should also detail where the disclosure was made and who else was present. The record should be handed to the DSL.

### **Notifying Parents**

The School will normally seek to discuss any concerns about a pupil with their parents. This must be handled sensitively and normally the DSL/DDSL will contact the parent in the event of a concern, suspicion or disclosure.

However, if the school believes that notifying parents could increase the risk to the child or exacerbate the problem, advice will first be sought from children's MASH.

Where there are concerns about forced marriage or honour based violence parents should not be informed a referral is being made as to do so may place the child at a significantly increased risk.

### **Making a referral**

- Concerns about a child or a disclosure should be immediately raised with the DSL who will help decide whether a referral to children's MASH or other support is appropriate in accordance with Devon Children and Families Partnership Threshold Tool
- If a referral is needed, then the DSL should make this rapidly and ensure systems are in place to enable this to happen. However, anyone can make a referral and if for any reason a staff member thinks a referral is appropriate and one hasn't been made they can and should consider making a referral themselves.
- The child (subject to their age and understanding) and the parents will be told that a referral is being made, unless to do so would increase the risk to the child.
- If after a referral the child's situation does not appear to be improving the designated safeguarding lead (or the person that made the referral) should press for re-consideration to ensure their concerns have been addressed, and most importantly the child's situation improves.
- If a child is in immediate danger or is at risk of harm a referral should be made to children's MASH and/or the police immediately. Anybody can make a referral.
- Where referrals are not made by the DSL, the DSL should be informed as soon as possible.

### **Supporting Staff**

- We recognise that staff working in the school who have become involved with a child who has suffered harm or appears to be likely to suffer harm may find the situation stressful and upsetting.
- We will support such staff by providing an opportunity to talk through their anxieties with the DSLs and to seek further support as appropriate.

### **Children who are particularly vulnerable**

Westclyst Community Primary School recognises that some children are more vulnerable to abuse and neglect and that additional barriers exist when recognising abuse for some children.

We understand that this increase in risk is due more to societal attitudes and assumptions or child protection procedures which fail to acknowledge children's diverse circumstances, rather than the individual child's personality, impairment or circumstances.

In some cases, possible indicators of abuse such as a child's mood, behaviour or injury might be assumed to relate to the child's impairment or disability rather than giving a cause for concern. Or a focus may be on the child's disability, special educational needs or situation without consideration of the full picture. In other cases, such as bullying, the child may be disproportionately impacted by the behaviour without outwardly showing any signs that they are experiencing it.

Some children may also find it harder to disclose abuse due to communication barriers, lack of access to a trusted adult or not being aware that what they are experiencing is abuse.

Any child may benefit from early help, but all school and college staff should be particularly alert to the potential need for early help for a child who:

- is disabled and has specific additional needs;
- has special educational needs (whether or not they have a statutory education, health and care plan);
- is a young carer;
- is showing signs of being drawn in to anti-social or criminal behaviour, including gang involvement and association with organised crime groups;
- is frequently missing/goes missing from care or from home;
- is misusing drugs or alcohol themselves;
- Is at risk of modern slavery, trafficking or exploitation;
- is in a family circumstance presenting challenges for the child, such as substance abuse, adult mental health problems or domestic abuse;
- has returned home to their family from care;
- is showing early signs of abuse and/or neglect;
- is at risk of being radicalised or exploited;
- is a privately fostered child.

### **Anti-Bullying/Cyberbullying**

Our school policy on anti-bullying is set out in a separate document and acknowledges that to allow or condone bullying may lead to consideration under child protection procedures. This includes all forms e.g. cyber, racist, homophobic and gender related bullying. We keep a record of known bullying incidents which is shared with and analysed by the governing body. All staff are aware that children with SEND and / or differences/perceived differences are more susceptible to being bullied / victims of child abuse.

If the bullying is particularly serious, or the anti-bullying procedures are seen to be ineffective, the headteacher and the DSL will consider implementing child protection procedures.

The subject of bullying is addressed at regular intervals in PHSE education.

### **Racist Incidents**

Our policy on racist incidents is set out separately and acknowledges that repeated racist incidents or a single serious incident may lead to consideration under child protection procedures. We keep a record of racist incidents and report them to the Local Authority.

### **Radicalisation and Extremism**

The Prevent Duty for England and Wales (2015) under section 26 of the Counter-Terrorism and Security Act 2015 places a duty on education and other children's services to have due regard to the need to prevent people from being drawn into terrorism.

Extremism is defined as 'as 'vocal or active opposition to fundamental British values, including democracy, the rule of law, individual liberty and mutual respect and tolerance of different faiths and beliefs. We also include in our definition of extremism calls for the death of members of our armed forces, whether in this country or overseas.

Some children are at risk of being radicalised; adopting beliefs and engaging in activities which are harmful, criminal or dangerous.

Westclyst Community Primary School is clear that exploitation of vulnerable children and radicalisation should be viewed as a safeguarding concern and follows the Department for Education

guidance for schools and childcare providers on preventing children and young people from being drawn into terrorism<sup>7</sup>.

Westclyst Community Primary School seeks to protect children and young people against the messages of all violent extremism including, but not restricted to, those linked to Islamist ideology, or to Far Right / Neo Nazi / White Supremacist ideology, Irish Nationalist and Loyalist paramilitary groups, and extremist Animal Rights movements.

School staff receive training to help identify early signs of radicalisation and extremism. Indicators of vulnerability to radicalisation are in detailed in Appendix 6.

Opportunities are provided in the curriculum to enable pupils to discuss issues of religion, ethnicity and culture and the school follows the DfE advice Promoting Fundamental British Values as part of SMSC (spiritual, moral, social and cultural education) in Schools (2014)<sup>8</sup>.

The school governors, the Head Teacher and the Designated Safeguarding Lead (DSL) will assess the level of risk within the school and put actions in place to reduce that risk. Risk assessment may include, the use of school premises by external agencies, anti-bullying policy and other issues specific to the school's profile, community and philosophy.

When any member of staff has concerns that a pupil may be at risk of radicalisation or involvement in terrorism, they should speak with the DSL. They should then follow normal safeguarding procedures. If the matter is urgent then Devon & Cornwall Police must be contacted by dialling 999. In non-urgent cases where police advice is sought then dial 101. The Department of Education has also set up a dedicated telephone helpline for staff and governors to raise concerns around Prevent (020 7340 7264).

### **Domestic Abuse**

Domestic abuse represents one quarter of all violent crime. It is actual or threatened physical, emotional, psychological or sexual abuse. It involves the use of power and control by one person over another. It occurs regardless of race, ethnicity, gender, class, sexuality, age, religion, mental or physical ability. Domestic abuse can also involve other types of abuse.

We use the term domestic abuse to reflect that a number of abusive and controlling behaviours are involved beyond violence.

Slapping, punching, kicking, bruising, rape, ridicule, constant criticism, threats, manipulation, sleep deprivation, social isolation, and other controlling behaviours all count as abuse.

Living in a home where domestic abuse takes place is harmful to children and can have a serious impact on their behaviour, wellbeing and understanding of healthy, positive relationships. Children who witness domestic abuse are at risk of significant harm and staff are alert to the signs and symptoms of a child suffering or witnessing domestic abuse (See Appendix 5).

### **Child Sexual Exploitation (CSE)**

~~Child sexual exploitation is a form of child sexual abuse. It occurs where an individual or group takes advantage of an imbalance of power to coerce, manipulate or deceive a child or young person under the age of 18 into sexual activity (a) in exchange for something the victim needs or wants, and/or (b) for the financial advantage or increased status of the perpetrator or facilitator. The victim may have been sexually exploited even if the sexual activity appears consensual. Child sexual exploitation does not always involve physical contact, it can also occur through the use of technology. More information and the indicators of CSE is set out in appendix 3. CSE can happen online and offline and all staff should be aware of the link between online safety and vulnerability to CSE.~~

### **Child Sexual Exploitation (CSE) and Child Criminal Exploitation (CCE)**

28. Both CSE and CCE are forms of abuse and both occur where an individual or group takes advantage of an imbalance in power to coerce, manipulate or deceive a child into sexual or criminal activity. Whilst age may be the most obvious, this power imbalance can also be due to a range of other factors including gender, sexual identity, cognitive ability, physical strength, status, and access to economic or other resources. In some cases, the abuse will be in exchange for something the victim needs or

---

<sup>7</sup> [The Prevent duty](#)

<sup>8</sup> [Promoting Fundamental British Values](#)

wants and/or will be to the financial benefit or other advantage (such as increased status) of the perpetrator or facilitator. The abuse can be perpetrated by individuals or groups, males or 10 females, and children or adults. The abuse can be a one-off occurrence or a series of incidents over time, and range from opportunistic to complex organised abuse. It can involve force and/or enticement-based methods of compliance and may, or may not, be accompanied by violence or threats of violence. Victims can be exploited even when activity appears consensual and it should be noted exploitation as well as being physical can be facilitated and/or take place online. More information include definitions and indicators are included in Appendix 3.

Any concerns that a child is being or is at risk of being sexually exploited should be passed without delay to the DSL. Westclyst Community Primary School is aware there is a clear link between regular school absence/truanting and CSE. Staff should consider a child to be at potential CSE risk in the case of regular school absence/truanting and make reasonable enquiries with the child and parents to assess this risk.

The DSL will use the Devon Children and Families Partnership CSE Screening Tool<sup>9</sup> on all occasions when there is a concern that a child is being or is at risk of being sexually exploited or where indicators have been observed that are consistent with a child who is being or who is at risk of being sexually exploited.

In all cases if the tool identified any level of concern the DSL should contact their local MACSE and email the completed CSE Screening Tool along with a MASH enquiry form. If a child is in immediate danger the police should be called on 999.

Westclyst Community Primary School is aware that a child often is not able to recognise the coercive nature of the abuse and does not see themselves as a victim. As a consequence, the child may resent what they perceive as interference by staff. However, staff must act on their concerns as they would for any other type of abuse.

Westclyst Community Primary School includes the risks of sexual exploitation in the PHSE and SRE curriculum. Pupils will be informed of the grooming process and how to protect themselves from people who may potentially be intent on causing harm. They will be supported in terms of recognising and assessing risk in relation to CSE, including online, and knowing how and where to get help.

### **Female Genital Mutilation (FGM)**

Female Genital Mutilation (FGM) is illegal in England and Wales under the FGM Act (2003). It is a form of child abuse and violence against women. A mandatory reporting duty requires teachers to report 'known' cases of FGM in under 18s, which are identified in the course of their professional work, to the police<sup>10</sup>.

The duty applies to all persons in Westclyst Community Primary School who is employed or engaged to carry out 'teaching work' in the school, whether or not they have qualified teacher status. The duty applies to the individual who becomes aware of the case to make a report. It should not be transferred to the Designated Safeguarding Lead; however the DSL should be informed.

If a teacher is informed by a girl under 18 that an act of FGM has been carried out on her or a teacher observes physical signs which appear to show that an act of FGM has been carried out on a girl under 18 and they have no reason to believe the act was necessary for the girl's physical or mental health or for purposes connected with labour or birth, the teacher should personally make a report to the police force in which the girl resides by calling 101. The report should be made by the close of the next working day.

School staff are trained to be aware of risk indicators of FGM which are set out in Appendix 4. Concerns about FGM outside of the mandatory reporting duty should be reported as per Westclyst Community Primary School's child protection procedures. Staff should be particularly alert to suspicions or concerns expressed by female pupils about going on a long holiday during the summer vacation period. There should also be consideration of potential risk to other girls in the family and practicing community.

---

<sup>9</sup> [DCFP screening tool](#)

<sup>10</sup> [FGM procedural information](#)

Where there is a risk to life or likelihood of serious immediate harm the teacher should report the case immediately to the police, including dialling 999 if appropriate.

There are no circumstances in which a teacher or other member of staff should examine a girl.

### **Forced Marriage**

A forced marriage is a marriage in which one or both people do not (or in cases of people with learning disabilities cannot) consent to the marriage but are coerced into it. Coercion may include physical, psychological, financial, sexual and emotional pressure. It may also involve physical or sexual violence and abuse.

Forced marriage is an appalling and indefensible practice and is recognised in the UK as a form of violence against women and men, domestic/child abuse and a serious abuse of human rights. Since June 2014 forcing someone to marry has become a criminal offence in England and Wales under the Anti-Social Behaviour, Crime and Policing Act 2014.

A forced marriage is not the same as an arranged marriage which is common in several cultures. The families of both spouses take a leading role in arranging the marriage but the choice of whether or not to accept the arrangement remains with the prospective spouses.

School staff should never attempt to intervene directly as a school or through a third party. Contact should be made with MASH

### **Honour-based Violence**

Honour based violence (HBV) can be described as a collection of practices, which are used to control behaviour within families or other social groups to protect perceived cultural and religious beliefs and/or honour. Such violence can occur when perpetrators perceive that a relative has shamed the family and/or community by breaking their honour code.

Honour based violence might be committed against people who;

- become involved with a boyfriend or girlfriend from a different culture or religion;
- want to get out of an arranged marriage;
- want to get out of a forced marriage;
- wear clothes or take part in activities that might not be considered traditional within a culture.

It is a violation of human rights and may be a form of domestic and/or sexual abuse. There is no, and cannot be, honour or justification for abusing the human rights of others.

### **One Chance Rule**

All staff are aware of the 'One Chance' Rule' in relation to forced marriage, FGM and HBV. Staff recognise they may only have one chance' to speak to a pupil who is a potential victim and have just one chance to save a life.

Westclyst Community Primary School are aware that if the victim is not offered support following disclosure that the 'One Chance' opportunity may be lost. Therefore, all staff are aware of their responsibilities and obligations when they become aware of potential forced marriage, FGM and HBV cases.

### **Mental Health**

All staff should also be aware that mental health problems can, in some cases, be an indicator that a child has suffered or is at risk of suffering abuse, neglect or exploitation.

Only appropriately trained professionals should attempt to make a diagnosis of a mental health problem. Staff however, are well placed to observe children day-to-day and identify those whose behaviour suggests that they may be experiencing a mental health problem or be at risk of developing one.

Where children have suffered abuse and neglect, or other potentially traumatic adverse childhood experiences, this can have a lasting impact throughout childhood, adolescence and into adulthood. It is key that staff are aware of how these children's experiences, can impact on their mental health, behaviour and education.



If staff have a mental health concern about a child that is also a safeguarding concern, immediate action should be taken, following this child protection policy and speaking to the designated safeguarding lead or a deputy.

### **Private Fostering Arrangements**

A private fostering arrangement occurs when someone other than a parent or close relative cares for a child for a period of 28 days or more, with the agreement of the child's parents. It applies to children under the age of 16 or 18 if the child is disabled. Children looked after by the local authority or who are placed in residential schools, children's homes or hospitals are not considered to be privately fostered.

Private fostering occurs in all cultures, including British culture and children may be privately fostered at any age.

Westclyst Community Primary School recognises that most privately fostered children remain safe and well but are aware that safeguarding concerns have been raised in some cases. Therefore, all staff are alert to possible safeguarding issues, including the possibility that the child has been trafficked into the country.

By law, a parent, private foster carer or other persons involved in making a private fostering arrangement must notify children's services as soon as possible. However, where a member of staff becomes aware that a pupil may be in a private fostering arrangement they will raise this with the DSL and the DSL will notify MASH of the circumstances.

### **Looked after children and previously looked after children**

The most common reason for children becoming looked after is as a result of abuse and neglect. Westclyst Community Primary School ensures that staff have the necessary skills and understanding to keep looked after/previously looked after children safe. Appropriate staff have information about a child's looked after legal status and care arrangements, including the level of authority delegated to the carer by the authority looking after the child and contact arrangements with birth parents or those with parental responsibility.

The designated teacher for looked after children and the DSL have details of the child's social worker and the name and contact details of the Devon County Council's virtual school head for children in care.

The designated teacher for looked after children works with the virtual school head to discuss how Pupil Premium Plus funding can be best used to support the progress of looked after children in the school and meet the needs in the child's personal education plan. The designated teacher will follow the statutory guidance 'Promoting the education of Looked After Children'.

### **Children Missing Education**

Attendance, absence and exclusions are closely monitored. The school will hold more than one emergency contact number for pupils and students where reasonably possible. A child going missing from education is a potential indicator of abuse and neglect, including sexual abuse and sexual exploitation.

The DSL will monitor unauthorised absences and take appropriate action including notifying the local authority particularly where children go missing on repeat occasions and/or are missing for periods during the school day in conjunction with 'Children Missing Education: Statutory Guidance for Local Authorities'<sup>11</sup>.

Staff must be alert to signs of children at risk of travelling to conflict zones, female genital mutilation and forced marriage.

### **Online Safety**

Our pupils increasingly use electronic equipment daily to access the internet and share content and images via social media sites such as Facebook, twitter, Instagram, Snapchat and ooVoo.

Unfortunately, some adults and other children use these technologies to harm children. The harm might range from sending hurtful or abusive texts or emails, to grooming and enticing children to

---

<sup>11</sup> [CME Statutory Guidance for Local Authorities](#)

engage in sexual behaviour such as webcam photography or face-to-face meetings. Pupils may also be distressed or harmed by accessing inappropriate material such as pornographic websites or those which promote extremist behaviour, criminal activity, suicide or eating disorders.

Westclyst Community Primary School has an online safety policy which explains how we try to keep pupils safe in school and how we respond to online safety incidents (See flowchart, Appendix 7).

Pupils are taught about online safety throughout the curriculum and all staff receive online safety training which is regularly updated. The school online safety co-ordinator is Anthony Lees.

## **Child on Child Sexual violence and sexual harassment**

The DSL, Governing Body/Board and Head Teacher will take due regard to Part 5, KCSiE 2020 in most instances, the conduct of pupils towards each other will be covered by our behaviour policy. However, some allegations may be of such a serious nature that they may raise safeguarding concerns. Westclyst Community Primary School recognise that children can abuse their peers. It will not be passed off as 'banter' or 'part of growing up'. The forms of peer on peer abuse are outlined below.

- Domestic abuse – an incident or pattern of actual or threatened acts of physical, sexual, financial and/or emotional abuse, perpetrated by an adolescent against a current or former dating partner regardless of gender or sexuality.
- Child Sexual Exploitation – children under the age of 18 may be sexually abused in the context of exploitative relationships, contexts and situations by peers who are also under 18.
- Harmful Sexual Behaviour – Children and young people presenting with sexual behaviours that are outside of developmentally 'normative' parameters and harmful to themselves and others (For more information, please see Appendix 2).
- Serious Youth Violence – Any offence of most serious violence or weapon enabled crime, where the victim is aged 1-19' i.e. murder, manslaughter, rape, wounding with intent and causing grievous bodily harm. 'Youth violence' is defined in the same way, but also includes assault with injury offences.

The term peer-on-peer abuse can refer to all these definitions and a child may experience one or multiple facets of abuse at any one time. Therefore, our response will cut across these definitions and capture the complex web of their experiences.

There are also different gender issues that can be prevalent when dealing with peer on peer abuse (i.e. girls being sexually touched/assaulted, or boys being subjected to initiation/hazing type violence).

Westclyst Community Primary School aims to reduce the likelihood of peer on peer abuse through;

- the established ethos of respect, friendship, courtesy and kindness;
- high expectations of behaviour;
- clear consequences for unacceptable behaviour;
- providing a developmentally appropriate PSHE curriculum which develops pupils' understanding of healthy relationships, acceptable behaviour, consent and keeping themselves safe;
- systems for any pupil to raise concerns with staff, knowing that they will be listened to, valued and believed;
- robust risk assessments and providing targeted work for pupils identified as being a potential risk to other pupils and those identified as being at risk.

Research indicates that young people rarely disclose peer on peer abuse and that if they do, it is likely to be to their friends. Therefore, Westclyst Community Primary School will also educate pupils in how to support their friends if they are concerned about them, that they should talk to a trusted adult in the school and what services they can contact for further advice.

Any concerns, disclosures or allegations of peer on peer abuse in any form should be referred to the DSL using Westclyst Community Primary School's child protection procedures as set out in this policy. Where a concern regarding peer on peer abuse has been disclosed to the DSL(s), advice and guidance

will be sought from MASH and where it is clear a crime has been committed or there is a risk of crime being committed the Police will be contacted.

Working with external agencies the school will respond to the unacceptable behaviour. If a pupil's behaviour negatively impacts on the safety and welfare of other pupils then safeguards will be put in place to promote the well-being of the pupils affected and the victim and perpetrator will be provided with support.

### **Youth produced sexual imagery (sexting)<sup>12</sup>**

The practice of children sharing images and videos via text message, email, social media or mobile messaging apps has become commonplace. However, this online technology has also given children the opportunity to produce and distribute sexual imagery in the form of photos and videos. Such imagery involving anyone under the age of 18 is illegal.

Youth produced sexual imagery refers to both images and videos where;

- A person under the age of 18 creates and shares sexual imagery of themselves with a peer under the age of 18.
- A person under the age of 18 shares sexual imagery created by another person under the age of 18 with a peer under the age of 18 or an adult.
- A person under the age of 18 is in possession of sexual imagery created by another person under the age of 18.

All incidents of this nature should be treated as a safeguarding concern and in line with the UKCCIS guidance 'Sexting in schools and colleges: responding to incidents and safeguarding young people'<sup>13</sup>. Cases where sexual imagery of people under 18 has been shared by adults and where sexual imagery of a person of any age has been shared by an adult to a child is child sexual abuse and should be responded to accordingly.

If a member of staff becomes aware of an incident involving youth produced sexual imagery they should follow the child protection procedures and refer to the DSL as soon as possible. The member of staff should confiscate the device involved and set it to flight mode or, if this is not possible, turn it off. Staff should not view, copy or print the youth produced sexual imagery.

The DSL should hold an initial review meeting with appropriate school staff and subsequent interviews with the children involved (if appropriate). Parents should be informed at an early stage and involved in the process unless there is reason to believe that involving parents would put the child at risk of harm. At any point in the process if there is concern a young person has been harmed or is at risk of harm a referral should be made to MASH or the Police as appropriate.

Immediate referral at the initial review stage should be made to MASH/Police if;

- The incident involves an adult;
- There is good reason to believe that a young person has been coerced, blackmailed or groomed or if there are concerns about their capacity to consent (for example, owing to special education needs);
- What you know about the imagery suggests the content depicts sexual acts which are unusual for the child's development stage or are violent;
- The imagery involves sexual acts;
- The imagery involves anyone aged 12 or under;
- There is reason to believe a child is at immediate risk of harm owing to the sharing of the imagery, for example the child is presenting as suicidal or self-harming.

If none of the above apply then the DSL will use their professional judgement to assess the risk to pupils involved and may decide, with input from the Headteacher, to respond to the incident without escalation to MASH or the police.

In applying judgement, the DSL will consider if;

---

<sup>12</sup> Youth refers to anyone under the age of 18

<sup>13</sup> [Sexting in schools and colleges](#)

- there is a significant age difference between the sender/receiver;
- there is any coercion or encouragement beyond the sender/receiver;
- the imagery was shared and received with the knowledge of the child in the imagery;
- the child is more vulnerable than usual i.e. at risk;
- there is a significant impact on the children involved;
- the image is of a severe or extreme nature;
- the child involved understands consent;
- the situation is isolated or if the image been more widely distributed;
- there other circumstances relating to either the sender or recipient that may add cause for concern i.e. difficult home circumstances;
- the children have been involved in incidents relating to youth produced imagery before.

If any of these circumstances are present the situation will be escalated according to our child protection procedures, including reporting to the police or MASH. Otherwise, the situation will be managed within the school.

The DSL will record all incidents of youth produced sexual imagery, including both the actions taken, actions not taken, reasons for doing so and the resolution in line with safeguarding recording procedures.

### **Allegations against staff**

All school staff should take care not to place themselves in a vulnerable position with a child. It is always advisable for interviews or work with individual children or parents to be conducted in view of other adults.

Guidance about conduct and safe practice, including safe use of mobile phones by staff and volunteers will be given at induction<sup>14</sup>.

We understand that a pupil may make an allegation against a member of staff or staff may have concerns about another staff member.

If such an allegation is made, or information is received which suggests that a person may be unsuitable to work with children, the member of staff receiving the allegation or aware of the information, will immediately inform the Headteacher<sup>15</sup>.

The Headteacher on all such occasions will discuss the content of the allegation with the Local Authority Designated Officer (LADO)<sup>16</sup> at the earliest opportunity and before taking any further action. If the allegation made to a member of staff concerns the Headteacher, the person receiving the allegation will immediately inform the Chair of Governors who will consult the LADO as above, without notifying the Headteacher first.

The school will follow the Devon procedures for managing allegations against staff, procedures set out in Keeping Children Safe in Education and the school's Managing Allegations policy and procedures.

Suspension of the member of staff, excluding the Headteacher, against whom an allegation has been made, needs careful consideration, and the Headteacher will seek the advice of the LADO and an HR Consultant in making this decision.

In the event of an allegation against the Headteacher, the decision to suspend will be made by the Chair of Governors with advice as above.

We have a procedure for managing the suspension of a contract for a community user in the event of an allegation arising in that context.

Staff, parents and governors are reminded that publication of material that may lead to the identification of a teacher who is the subject of an allegation is prohibited by law. Publication includes verbal conversations or writing including content placed on social media sites.

### **Whistle-blowing**

<sup>14</sup> Refer to "Guidance for Safe Working Practice"

<sup>15</sup> Chair of Trustees in the event of an allegation against the Headteacher

<sup>16</sup> Duty LADO 01392 384964 or email [ladosecure-mailbox@devon.gcsx.gov.uk](mailto:ladosecure-mailbox@devon.gcsx.gov.uk)

We recognise that children cannot be expected to raise concerns in an environment where staff fail to do so.

All staff should be aware of their duty to raise concerns, where they exist, about the management of child protection, which may include the attitude or actions of colleagues, poor or unsafe practice and potential failures in the school's safeguarding arrangements. If it becomes necessary to consult outside the school, they should speak in the first instance, to the LADO following the Whistleblowing Policy.

The NSPCC whistleblowing helpline is available for staff who do not feel able to raise concerns regarding child protection failures internally. Staff can call: 0800 028 0285 line is available from 8:00 AM to 8:00 PM, Monday to Friday and email: [help@nspcc.org.uk](mailto:help@nspcc.org.uk)

Whistle-blowing re the Headteacher should be made to the Chair of the Governing Body whose contact details are readily available to staff (as pertinent to setting).

### **Physical Intervention**

We acknowledge that staff must only ever use physical intervention as a last resort, when a child is endangering him/herself or others, and that at all times it must be the minimal force necessary to prevent injury to another person.

Such events should be recorded and signed by a witness.

Staff who are likely to need to use physical intervention will be appropriately trained.

We understand that physical intervention of a nature which causes injury or distress to a child may be considered under child protection or disciplinary procedures.

We recognise that touch is appropriate in the context of working with children, and all staff have been given 'Safe Practice' guidance to ensure they are clear about their professional boundary.

### **Confidentiality, sharing information and GDPR**

All staff will understand that child protection issues warrant a high level of confidentiality, not only out of respect for the pupil and staff involved but also to ensure that information being released into the public domain does not compromise evidence.

Staff should only discuss concerns with the DSL, headteacher/principal or chair of governors (depending on who is the subject of the concern). That person will then decide who else needs to have the information and they will disseminate it on a 'need-to-know' basis.

However, following a number of cases where senior leaders in school had failed to act upon concerns raised by staff, Keeping Children Safe in Education (2020) emphasises that any member of staff can contact children's social care if they are concerned about a child.

Child protection information will be stored and handled in line with the Data Protection Act 2018 and HM Government Information Sharing and Advice for practitioners providing safeguarding services to children, young people, parents and carers, July 2018

Information sharing is guided by the following principles:

- necessary and proportionate
- relevant
- adequate
- accurate
- timely
- secure

Fears about sharing information cannot be allowed to stand in the way of the need to promote the welfare and protect the safety of children.

### **This policy also links to our policies on:**

- Behaviour
- Staff Behaviour Policy / Code of Conduct
- Whistleblowing
- Anti-bullying

- Health & Safety
- Allegations against staff
- Parental concerns
- Attendance
- Curriculum
- PSHE
- Teaching and Learning
- Administration of medicines
- Drug Education
- Sex and Relationships Education
- Physical intervention
- E-Safety, including staff use of mobile phones
- Risk Assessment
- Recruitment and Selection
- Child Sexual Exploitation
- Intimate Care
- Radicalisation and Extremism

## Appendix 1

### Recognising signs of child abuse

#### Categories of Abuse:

- Physical Abuse
- Emotional Abuse (including Domestic Abuse)
- Sexual Abuse (including child sexual exploitation)
- Neglect

#### Signs of Abuse in Children:

The following non-specific signs may indicate something is wrong:

- Significant change in behaviour
- Extreme anger or sadness
- Aggressive and attention-seeking behaviour
- Suspicious bruises with unsatisfactory explanations
- Lack of self-esteem
- Self-injury
- Depression
- Age inappropriate sexual behaviour
- Child Sexual Exploitation.

#### Risk Indicators

The factors described in this section are frequently found in cases of child abuse. Their presence is not proof that abuse has occurred, but:

- Must be regarded as indicators of the possibility of significant harm
- Justifies the need for careful assessment and discussion with designated / named / lead person, manager, (or in the absence of all those individuals, an experienced colleague)
- May require consultation with and / or referral to Children's Services

The absence of such indicators does not mean that abuse or neglect has not occurred.

In an abusive relationship the child may:

- Appear frightened of the parent/s
- Act in a way that is inappropriate to her/his age and development (though full account needs to be taken of different patterns of development and different ethnic groups)

The parent or carer may:

- Persistently avoid child health promotion services and treatment of the child's episodic illnesses
- Have unrealistic expectations of the child
- Frequently complain about/to the child and may fail to provide attention or praise (high criticism/low warmth environment)
- Be absent or misusing substances
- Persistently refuse to allow access on home visits
- Be involved in domestic abuse

Staff should be aware of the potential risk to children when individuals, previously known or suspected to have abused children, move into the household.

#### Recognising Physical Abuse

The following are often regarded as indicators of concern:

- An explanation which is inconsistent with an injury

- Several different explanations provided for an injury
- Unexplained delay in seeking treatment
- The parents/carers are uninterested or undisturbed by an accident or injury
- Parents are absent without good reason when their child is presented for treatment
- Repeated presentation of minor injuries (which may represent a “cry for help” and if ignored could lead to a more serious injury)
- Family use of different doctors and A&E departments
- Reluctance to give information or mention previous injuries

### Bruising

Children can have accidental bruising, but the following must be considered as non-accidental unless there is evidence, or an adequate explanation provided:

- Any bruising to a pre-crawling or pre-walking baby
- Bruising in or around the mouth, particularly in small babies which may indicate force feeding
- Two simultaneous bruised eyes, without bruising to the forehead, (rarely accidental, though a single bruised eye can be accidental or abusive)
- Repeated or multiple bruising on the head or on sites unlikely to be injured accidentally
- Variation in colour possibly indicating injuries caused at different times
- The outline of an object used e.g. belt marks, hand prints or a hair brush
- Bruising or tears around, or behind, the earlobe/s indicating injury by pulling or twisting
- Bruising around the face
- Grasp marks on small children
- Bruising on the arms, buttocks and thighs may be an indicator of sexual abuse

### Bite Marks

Bite marks can leave clear impressions of the teeth. Human bite marks are oval or crescent shaped. Those over 3 cm in diameter are more likely to have been caused by an adult or older child. A medical opinion should be sought where there is any doubt over the origin of the bite.

### Burns and Scalds

It can be difficult to distinguish between accidental and non-accidental burns and scalds and will always require experienced medical opinion. Any burn with a clear outline may be suspicious e.g.:

- Circular burns from cigarettes (but may be friction burns if along the bony protuberance of the spine)
- Linear burns from hot metal rods or electrical fire elements
- Burns of uniform depth over a large area
- Scalds that have a line indicating immersion or poured liquid (a child getting into hot water is his/her own accord will struggle to get out and cause splash marks)
- Old scars indicating previous burns/scalds which did not have appropriate treatment or adequate explanation

Scalds to the buttocks of a small child, particularly in the absence of burns to the feet, are indicative of dipping into a hot liquid or bath.

### Fractures

Fractures may cause pain, swelling and discolouration over a bone or joint. Non-mobile children rarely sustain fractures.

There are grounds for concern if:

- The history provided is vague, non-existent or inconsistent with the fracture type
- There are associated old fractures



- Medical attention is sought after a period of delay when the fracture has caused symptoms such as swelling, pain or loss of movement
- There is an unexplained fracture in the first year of life

### Scars

A large number of scars or scars of different sizes or ages, or on different parts of the body, may suggest abuse.

### Recognising Emotional Abuse

Emotional abuse may be difficult to recognise, as the signs are usually behavioural rather than physical. The manifestations of emotional abuse might also indicate the presence of other kinds of abuse. The indicators of emotional abuse are often also associated with other forms of abuse.

The following may be indicators of emotional abuse:

- Developmental delay
- Abnormal attachment between a child and parent/carer e.g. anxious, indiscriminate, or not attachment
- Indiscriminate attachment or failure to attach
- Aggressive behaviour towards others
- Scape-goated within the family
- Frozen watchfulness, particularly in pre-school children
- Low self-esteem and lack of confidence
- Withdrawn or seen as a “loner” – difficulty relating to others

### Recognising Signs of Sexual Abuse

Boys and girls of all ages may be sexually abused and are frequently scared to say anything due to guilt and/or fear. This is particularly difficult for a child to talk about and full account should be taken of the cultural sensitivities of any individual child/family.

Recognition can be difficult, unless the child discloses and is believed. There may be no physical signs and indications are likely to be emotional/behavioural.

Some behavioural indicators associated with this form of abuse are:

- Inappropriate sexualised conduct
- Sexually explicit behaviour, play or conversation, inappropriate to the child’s age
- Continual and inappropriate or excessive masturbation
- Self-harm (including eating disorder), self-mutilation and suicide attempts
- Involvement in prostitution or indiscriminate choice of sexual partners
- An anxious unwillingness to remove clothes e.g. for sports events (but this may be related to cultural norms or physical difficulties)

Some physical indicators associated with this form of abuse are:

- Pain or itching of genital area
- Blood on underclothes
- Pregnancy in a younger girl where the identity of the father is not disclosed
- Physical symptoms such as injuries to the genital or anal area, bruising to buttocks, abdomen and thighs, sexually transmitted disease, presence of semen on vagina, anus, external genitalia or clothing

### Recognising Neglect

Evidence of neglect is built up over a period of time and can cover different aspects of parenting.

Indicators include:

- Failure by parents or carers to meet the basic essential needs e.g. adequate food, clothes, warmth, hygiene and medical care
- A child seen to be listless, apathetic and irresponsible with no apparent medical cause

- Failure of child to grow within normal expected pattern, with accompanying weight loss
- Child thrives away from home environment
- Child frequently absent from school
- Child left with adults who are intoxicated or violent
- Child abandoned or left alone for excessive periods

## Appendix 2

### Sexual Abuse & Sexual Harassment

The boundary between what is abusive and what is part of normal childhood or youthful experimentation can be blurred. The determination of whether behaviour is developmental, inappropriate or abusive will hinge around the related concepts of true consent, power imbalance and exploitation. This may include children and young people who exhibit a range of sexually problematic behaviour such as indecent exposure, obscene telephone calls, fetishism, bestiality and sexual abuse against adults, peers or children. Staff should be vigilant to:

- bullying (including cyberbullying)
- physical abuse such as hitting, kicking, shaking, biting, hair pulling, or otherwise causing physical harm
- sexual violence and sexual harassment
- upskirting, typically involves taking a picture under a person's clothing without them knowing, with the intention of viewing their genitals or buttocks to obtain sexual gratification, or cause the victim humiliation, distress or alarm;
- sexting (also known as youth produced sexual imagery)
- initiation/hazing type violence and rituals

#### Developmental Sexual Activity

Encompasses those actions that are to be expected from children and young people as they move from infancy through to an adult understanding of their physical, emotional and behavioural relationships with each other. Such sexual activity is essentially information gathering and experience testing. It is characterised by mutuality and of the seeking of consent.

#### Inappropriate Sexual Behaviour

Can be inappropriate socially, in appropriate to development, or both. In considering whether behaviour fits into this category, it is important to consider what negative effects it has on any of the parties involved and what concerns it raises about a child or young person. It should be recognised that some actions may be motivated by information seeking, but still cause significant upset, confusion, worry, physical damage, etc. It may also be that the behaviour is "acting out" which may derive from other sexual situations to which the child or young person has been exposed. If an act appears to have been inappropriate, there may still be a need for some form of behaviour management or intervention. For some children, educative inputs may be enough to address the behaviour.

Abusive sexual activity included any behaviour involving coercion, threats, aggression together with secrecy, or where one participant relies on an unequal power base. In order to more fully determine the nature of the incident the following factors should be given consideration. The presence of exploitation in terms of:

Equality – consider differentials of physical, cognitive and emotional development, power and control and authority, passive and assertive tendencies

Consent – agreement including all the following:

- Understanding that is proposed based on age, maturity, development level, functioning and experience
- Knowledge of society's standards for what is being proposed
- Awareness of potential consequences and alternatives
- Assumption that agreements or disagreements will be respected equally
- Voluntary decision
- Mental competence

Coercion – the young perpetrator who abuses may use techniques like bribing, manipulation and emotional threats of secondary gains and losses that is loss of love, friendship, etc. Some may use physical force, brutality or the threat of these regardless of victim resistance.

In evaluating sexual behaviour of children and young people, the above information should be used only as a guide. Further information and advice is available in the Devon multi-agency protocol “Working with Sexually Active Young People” available at [www.devon.gov.uk/safeguarding](http://www.devon.gov.uk/safeguarding) by choosing Safeguarding Children – Protocols and Guidance for Professionals.

## **Appendix 3**

### **Child Criminal Exploitation (CCE)**

CCE is where an individual or group takes advantage of an imbalance of power to coerce, control, manipulate or deceive a child into any criminal activity (a) in exchange for something the victim needs or wants, and/or (b) for the financial or other advantage of the perpetrator or facilitator and/or (c) through violence or the threat of violence. The victim may have been criminally exploited even if the activity appears consensual. CCE does not always involve physical contact; it can also occur through the use of technology. CCE can include children being forced to work in cannabis factories, being coerced into moving drugs or money across the country (county lines, see page 85 for more information), forced to shoplift or pickpocket, or to threaten other young people.

Some of the following can be indicators of CCE:

- children who appear with unexplained gifts or new possessions;
- children who associate with other young people involved in exploitation;
- children who suffer from changes in emotional well-being;
- children who misuse drugs and alcohol;
- children who go missing for periods of time or regularly come home late; and
- children who regularly miss school or education or do not take part in education.

### **Child Sexual Exploitation (CSE)**

CSE occurs where an individual or group takes advantage of an imbalance of power to coerce, manipulate or deceive a child into sexual activity (a) in exchange for something the victim needs or wants, and/or (b) for the financial advantage or increased status of the perpetrator or facilitator. The victim may have been sexually exploited even if the sexual activity appears consensual. CSE does not always involve physical contact; it can also occur through the use of technology. CSE can affect any child or young person (male or female) under the age of 18 years, including 16 and 17 year olds who can legally consent to have sex. It can include both contact (penetrative and non-penetrative acts) and non-contact sexual activity and may occur without the child or young person's immediate knowledge (e.g. through others copying videos or images they have created and posted on social media).

The above CCE indicators can also be indicators of CSE, as can:

- children who have older boyfriends or girlfriends; and
- children who suffer from sexually transmitted infections or become pregnant.

## **Appendix 4**

### **Female Genital Mutilation (FGM)**

It is essential that staff are aware of FGM practices and the need to look for signs, symptoms and other indicators of FGM. If a member of staff, in the course of their work, discovers that an act of FGM appears to have been carried out, the member of staff must report this to the Police.

Female Genital Mutilation (FGM) is illegal in England and Wales under the FGM Act 2003 ("the 2003 Act"). It is a form of child abuse and violence against women. FGM comprises all procedures involving partial or total removal of the external female genitalia for non-medical reasons.

Section 5B of the 2003 Act<sup>1</sup> introduces a mandatory reporting duty which requires regulated health and social care professionals and teachers in England and Wales to report 'known' cases of FGM in under 18s which they identify in the course of their professional work to the police. The duty came into force on 31 October 2015.

What is FGM?

It involves procedures that intentionally alter/injure the female genital organs for non-medical reasons.

4 types of procedure:

Type 1 Clitoridectomy – partial/total removal of clitoris

Type 2 Excision – partial/total removal of clitoris and labia minora

Type 3 Infibulation entrance to vagina is narrowed by repositioning the inner/outer labia

Type 4 all other procedures that may include: pricking, piercing, incising, cauterising and scraping the genital area.

Why is it carried out?

Belief that:

- FGM brings status/respect to the girl – social acceptance for marriage
- Preserves a girl's virginity
- Part of being a woman / rite of passage
- Upholds family honour
- Cleanses and purifies the girl
- Gives a sense of belonging to the community
- Fulfils a religious requirement
- Perpetuates a custom/tradition
- Helps girls be clean / hygienic
- Is cosmetically desirable
- Mistakenly believed to make childbirth easier

Is FGM legal?

FGM is internationally recognised as a violation of human rights of girls and women. It is illegal in most countries including the UK.

Circumstances and occurrences that may point to FGM happening are:

- Child talking about getting ready for a special ceremony
- Family taking a long trip abroad
- Child's family being from one of the 'at risk' communities for FGM (Kenya, Somalia, Sudan, Sierra Leon, Egypt, Nigeria, Eritrea as well as non-African communities including Yemeni, Afghani, Kurdistan, Indonesia and Pakistan)
- Knowledge that the child's sibling has undergone FGM
- Child talks about going abroad to be 'cut' or to prepare for marriage

Signs that may indicate a child has undergone FGM:

- Prolonged absence from school and other activities
- Behaviour change on return from a holiday abroad, such as being withdrawn and appearing subdued
- Bladder or menstrual problems
- Finding it difficult to sit still and looking uncomfortable
- Complaining about pain between the legs
- Mentioning something somebody did to them that they are not allowed to talk about
- Secretive behaviour, including isolating themselves from the group
- Reluctance to take part in physical activity
- Repeated urinal tract infection
- Disclosure

The 'One Chance' rule

As with Forced Marriage there is the 'One Chance' rule. It is essential that settings /schools/colleges act **without delay** and make a referral to children's services.

## **Appendix 5**

### **Domestic Abuse**

How does it affect children?

Children can be traumatised by seeing and hearing violence and abuse. They may also be directly targeted by the abuser or take on a protective role and get caught in the middle. In the long term this can lead to mental health issues such as depression, self-harm and anxiety.

What are the signs to look out for?

Children affected by domestic abuse reflect their distress in a variety of ways. They may change their usual behaviour and become withdrawn, tired, start to wet the bed and have behavioural difficulties. They may not want to leave their house or may become reluctant to return. Others will excel, using their time in your care as a way to escape from their home life. None of these signs are exclusive to domestic abuse so when you are considering changes in behaviours and concerns about a child, think about whether domestic abuse may be a factor.

What should I do if I suspect a family is affected by domestic abuse?

Contact: <https://new.devon.gov.uk/dsva/>

### **Serious violence**

All staff should be aware of indicators, which may signal that children are at risk from, or are involved with serious violent crime. These may include increased absence from school, a change in friendships or relationships with older individuals or groups, a significant decline in performance, signs of self-harm or a significant change in wellbeing, or signs of assault or unexplained injuries. Unexplained gifts or new possessions could also indicate that children have been approached by, or are involved with, individuals associated with criminal networks or gangs.

All staff should be aware of the associated risks and understand the measures in place to manage these. Advice for schools and colleges is provided in the Home Office's Preventing youth violence and gang involvement and its Criminal exploitation of children and vulnerable adults: county lines guidance.

## Appendix 6

### INDICATORS OF VULNERABILITY TO RADICALISATION

1. Radicalisation refers to the process by which a person comes to support terrorism and forms of extremism leading to terrorism.
2. Extremism is defined by the Government in the Prevent Strategy as:

*Vocal or active opposition to fundamental British values, including democracy, the rule of law, individual liberty and mutual respect and tolerance of different faiths and beliefs. We also include in our definition of extremism calls for the death of members of our armed forces, whether in this country or overseas.*
3. Extremism is defined by the Crown Prosecution Service as:

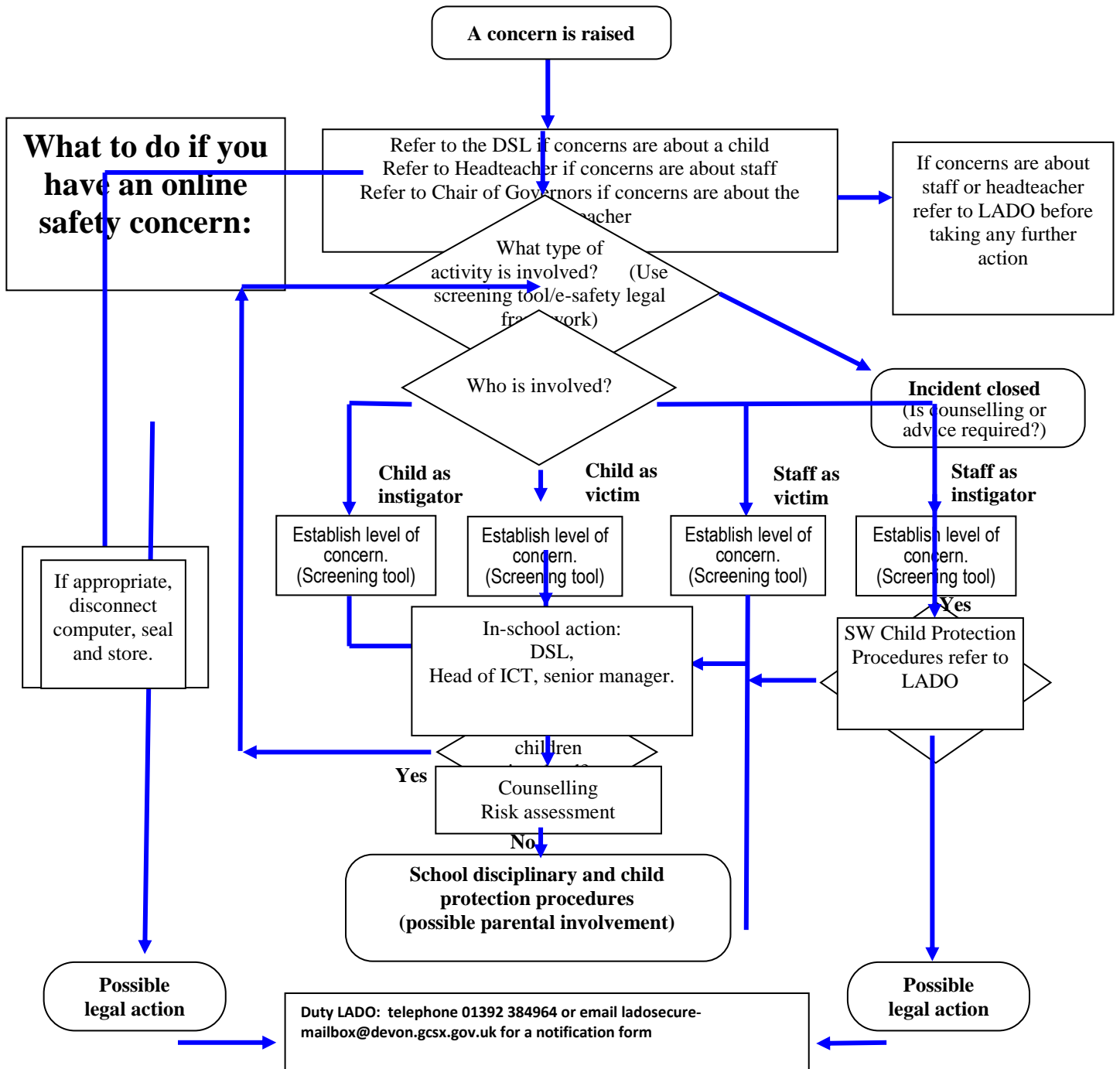
The demonstration of unacceptable behaviour by using any means or medium to express views which:

  - Encourage, justify or glorify terrorist violence in furtherance of particular beliefs;
  - Seek to provoke others to terrorist acts;
  - Encourage other serious criminal activity or seek to provoke others to serious criminal acts; or
  - Foster hatred which might lead to inter-community violence in the UK.
4. There is no such thing as a “typical extremist”: those who become involved in extremist actions come from a range of backgrounds and experiences, and most individuals, even those who hold radical views, do not become involved in violent extremist activity.
5. Pupils may become susceptible to radicalisation through a range of social, personal and environmental factors - it is known that violent extremists exploit vulnerabilities in individuals to drive a wedge between them and their families and communities. It is vital that school staff are able to recognise those vulnerabilities.
6. Indicators of vulnerability include:
  - Identity Crisis – the student / pupil is distanced from their cultural / religious heritage and experiences discomfort about their place in society;
  - Personal Crisis – the student / pupil may be experiencing family tensions; a sense of isolation; and low self-esteem; they may have dissociated from their existing friendship group and become involved with a new and different group of friends; they may be searching for answers to questions about identity, faith and belonging;
  - Personal Circumstances – migration; local community tensions; and events affecting the student / pupil’s country or region of origin may contribute to a sense of grievance that is triggered by personal experience of racism or discrimination or aspects of Government policy;
  - Unmet Aspirations – the student / pupil may have perceptions of injustice; a feeling of failure; rejection of civic life;
  - Experiences of Criminality – which may include involvement with criminal groups, imprisonment, and poor resettlement / reintegration;
  - Special Educational Need – students / pupils may experience difficulties with social interaction, empathy with others, understanding the consequences of their actions and awareness of the motivations of others.



7. However, this list is not exhaustive, nor does it mean that all young people experiencing the above are at risk of radicalisation for the purposes of violent extremism.
8. More critical risk factors could include:
  - Being in contact with extremist recruiters;
  - Accessing violent extremist websites, especially those with a social networking element;
  - Possessing or accessing violent extremist literature;
  - Using extremist narratives and a global ideology to explain personal disadvantage;
  - Justifying the use of violence to solve societal issues;
  - Joining or seeking to join extremist organisations; and
  - Significant changes to appearance and / or behaviour;
  - Experiencing a high level of social isolation resulting in issues of identity crisis and / or personal crisis.

[The Prevent Duty can be accessed via this link.](#)



## **Appendix 8**

Further advice on child protection is available from:

NSPCC: <http://www.nspcc.org.uk/>

Childline: <http://www.childline.org.uk/pages/home.aspx>

Anti-Bullying Alliance: <http://anti-bullyingalliance.org.uk/>

Beat Bullying: <http://www.beatbullying.org/>

Childnet International –making the internet a great and safe place for children. Includes resources for professionals and parents <http://www.childnet.com/>

Thinkuknow (includes resources for professionals and parents) <https://www.thinkuknow.co.uk/>

Safer Internet Centre <http://www.saferinternet.org.uk/>

Transgender <http://www.mermaidsuk.org.uk/>

[Schools transgender toolkit](#)

[Intercom trust transgender guidance](#)



## **For Early Help, Consultation and Enquiries please contact:**

Telephone: **0345 155 1071**

Email: [mashsecure@devon.gcsx.gov.uk](mailto:mashsecure@devon.gcsx.gov.uk)

Fax: 01392 448951

Enquiry Form available at:

<https://new.devon.gov.uk/making-a-mash-enquiry>

Post: **Multi-Agency Safeguarding Hub, P.O. Box 723, Exeter EX1 9QS**

**Emergency Duty Team** out of hours **0845 6000 388**

**Police** non-emergency 101

**For all LADO enquiries** Exeter (01392) 384964

<https://new.devon.gov.uk>

## **Early Help Team**

Senior Manager: TBC

Manager Exeter and South: TBC

Manager Mid & East: Ian Flett 07815 562 370

Manager South & West: Karen Hayes 07854 253424

Manager Northern: Sarah Simpson 07854 304 512

Locality Early Help Mailbox

North: [earlyhelpnorthsecuremailbox@devon.gcsx.gov.uk](mailto:earlyhelpnorthsecuremailbox@devon.gcsx.gov.uk)

Mid & East: [earlyhelpmideastsecuremailbox@devon.gcsx.gov.uk](mailto:earlyhelpmideastsecuremailbox@devon.gcsx.gov.uk)

South & West: [earlyhelpsouthsecuremailbox@devon.gcsx.gov.uk](mailto:earlyhelpsouthsecuremailbox@devon.gcsx.gov.uk)

Exeter: [earlyhelpexetersecuremailbox@devon.gcsx.gov.uk](mailto:earlyhelpexetersecuremailbox@devon.gcsx.gov.uk)

For emergencies outside of office hours please call:

### **The Designated Safeguarding Lead (DSL):**

- has the status and authority within the Trust to carry out the duties of the post, including committing resources and supporting and directing other staff



**Cornerstone Multi Academy Trust**

**Preventing Radicalisation Policy**

# **CORNERSTONE ACADEMY TRUST**

## **PREVENTING RADICALISATION POLICY**

### **SAFEGUARDING PUPILS/STUDENTS WHO ARE VULNERABLE TO EXTREMISM**

#### **Background**

This 'Preventing Radicalisation Policy' is part of our commitment to keeping children safe. Since the 'Education and Inspections Act 2006' schools have a duty to promote community cohesion. Over the last few years, global events have led to a growth of extremist viewpoints, including advocacy of violent extremism.

Schools have an important part to play in both educating children and young people about extremism and recognising when pupils start to become radicalised. In March 2015, new statutory duties were placed on schools by the Counter Terrorism and Security Act (2015) which means they must work to prevent children being drawn into extremism.

Safeguarding children from all risks of harm is an important part of a trust's work and protecting them from extremism is one aspect of that.

#### **Ethos**

At Cornerstone Academy Trust we ensure that through our school vision, values, rules, diverse curriculum and teaching we promote tolerance and respect for all cultures, faiths and lifestyles. The governing body also ensures that this ethos is reflected and implemented effectively in school policy and practice and that there are effective risk assessments in place to safeguard and promote students' welfare.

We have a duty to prepare our children for life in modern Britain and to keep them safe. Pupils who attend our school have the right to learn in safety. We do not tolerate bullying of any kind and will challenge derogatory language and behaviour towards others.

#### **Statutory Duties**

The duty to prevent children and young people being radicalised is set out in the following documents:

- Counter Terrorism and Security Act (2015)
- Keeping Children Safe in Education (DfE2020)
- Prevent Duty Guidance (2015)
- Working Together to Safeguard Children (2015)

#### **Non-statutory Guidance**

- Promoting fundamental British values as part of SMSC in schools: Departmental advice for maintained schools (DfE 2014)

Cornerstone Academy Trust values freedom of speech and the expression of beliefs / ideology as fundamental rights underpinning our society's values. Both pupils/students and teachers have the right to speak freely and voice their opinions. However, freedom comes with responsibility and free speech that is designed to manipulate the vulnerable or that leads to violence and harm of others goes against the moral principles in which freedom of speech is valued. Free speech is not an unqualified

privilege; it is subject to laws and policies governing equality, human rights, community safety and community cohesion.

The current threat from terrorism in the United Kingdom may include the exploitation of vulnerable people, to involve them in terrorism or in activity in support of terrorism. The normalisation of extreme views may also make children and young people vulnerable to future manipulation and exploitation. Cornerstone Academy Trust is clear that this exploitation and radicalisation should be viewed as a safeguarding concern.

Definitions of radicalisation and extremism, and indicators of vulnerability to radicalisation are in Appendix 1.

Cornerstone Academy Trust seeks to protect children and young people against the messages of all violent extremism including, but not restricted to, those linked to Islamist ideology, or to Far Right / Neo Nazi / White Supremacist ideology, Irish Nationalist and Loyalist paramilitary groups, and extremist Animal Rights movements.

### **Risk**

The school trustees, the Head Teacher/Principal and the Designated Safeguarding Lead will assess the level of risk within the school and put actions in place to reduce that risk. Risk assessment may include consideration of the trust's RE curriculum, SEND policy, assembly policy, the use of school premises by external agencies, integration of pupils by gender and SEN, anti-bullying policy and other issues specific to the trust's profile, community and philosophy.

This risk assessment will be reviewed as part of the annual s175 return that is monitored by the local authority and the local safeguarding children board.

### **Response**

Schools are required to identify a Prevent Single Point of Contact (SPOC) who will be the lead within the organisation for safeguarding in relation to protecting individuals from radicalisation and involvement in terrorism: this will normally be the Designated Safeguarding Lead. The SPOC for Cornerstone Academy Trust is Jonathan Bishop. The responsibilities of the SPOC are described in appendix 2.

When any member of staff has concerns that a pupil may be at risk of radicalisation or involvement in terrorism, they should speak with the SPOC and to the Designated Safeguarding Lead if this is not the same person. The process can be found in appendix 3

Numerous factors can contribute to and influence the range of behaviours that are defined as violent extremism, but most young people do not become involved in extremist action. For this reason, the appropriate interventions in any case may not have any specific connection to the threat of radicalisation, for example they may address mental health, relationship or drug/alcohol issues.

### **Internet Safety**

*Make sure this section applies to the Federation or change it to reflect our situation*

The internet provides children and young people with access to a wide-range of content, some of which is harmful. Extremists use the internet, including social media, to share their messages. The filtering systems used in our school blocks inappropriate content, including extremist content.

We also filter out social media, such as Facebook. Searches and web addresses are monitored, and the ICT technicians will alert senior staff where there are concerns and prevent further access when new sites that are unblocked are found.

Where staff, students or visitors find unblocked extremist content they must report it to a senior member of staff.

We are aware that children and young people have access to unfiltered internet when using their mobile phones and staff are alert to the need for vigilance when pupils are using their phones. The Acceptable Use of ICT Policy (AUP) refers to preventing radicalisation and related extremist content. Pupils and staff are asked to sign the AUP annually to confirm they have understood what is acceptable.

Pupils and staff know how to report internet content that is inappropriate or of concern.

### **Staff Training**

Staff will be given training to help them understand the issues of radicalisation, are able to recognise the signs of vulnerability or radicalisation and know how to refer their concerns. This information also forms part of induction safeguarding training. Staff are updated as necessary in weekly safeguarding briefings.

Appropriate staff will be WRAP trained

### **Safer Recruitment**

We ensure that the staff we appoint to the school are suitable, our recruitment procedures are rigorous, and we follow the statutory guidance published in part 3 of *Keeping Children Safe in Education (2020)*. Vetting and barring checks are undertaken on relevant people, including trustees and volunteers.

### **Visitors**

Visitors to the school are made aware of our safeguarding and child protection policies on arrival at the school and are given information about what to do if they are concerned about any aspect of child welfare.

Visitors who are invited to speak to pupils will be informed about our preventing extremism policy and relevant vetting checks are undertaken. We undertake due diligence to ensure that visiting speakers are appropriate. Speakers will be supervised at all times and will not be allowed to speak to children with a member of staff being present.

Staff must not invite speakers into school without first obtaining permission from the headteacher.

### **'No platform for extremists'**

The school is vigilant to the possibility that out-of-hours hire of the school premises may be requested by people wishing to run an extremist event. The school does not accept bookings from individuals or organisations that are extremist in their views.

### **Signs of vulnerability**

There are no known definitive indicators that a young person is vulnerable to radicalisation, but there are number of signs that together increase the risk.



Signs of vulnerability include:

- underachievement
- being in possession of extremist literature
- poverty
- social exclusion
- traumatic events
- global or national events
- religious conversion
- change in behaviour
- extremist influences
- conflict with family over lifestyle
- confused identify
- victim or witness to race or hate crimes
- rejection by peers, family, social groups or faith

### **Recognising Extremism**

Early indicators of radicalisation or extremism may include:

- showing sympathy for extremist causes
- glorifying violence, especially to other faiths or cultures
- making remarks or comments about being at extremist events or rallies outside school
- evidence of possessing illegal or extremist literature
- advocating messages similar to illegal organisations or other extremist groups
- out of character changes in dress, behaviour and peer relationships (but there are also very powerful narratives, programmes and networks that young people can come across online so involvement with particular groups may not be apparent.)
- secretive behaviour
- online searches or sharing extremist messages or social profiles
- intolerance of difference, including faith, culture, gender, race or sexuality
- graffiti, art work or writing that displays extremist themes
- attempts to impose extremist views or practices on others
- verbalising anti-Western or anti-British views
- advocating violence towards others

## **Monitoring and Review**

This policy will be monitored by the governing body at least annually by receiving a report from the Designated Safeguarding Lead.

This is not a statutory policy and will be reviewed at an appropriate time not later than two years after ratification by the governing body.

Signed (Headteacher)

Signed (Chair of Trustees)

Date:

## Appendix 1

### INDICATORS OF VULNERABILITY TO RADICALISATION

Radicalisation refers to the process by which a person comes to support terrorism and forms of extremism leading to terrorism.

Extremism is defined by the Government in the Prevent Strategy as:

Vocal or active opposition to fundamental British values, including democracy, the rule of law, individual liberty and mutual respect and tolerance of different faiths and beliefs. We also include in our definition of extremism calls for the death of members of our armed forces, whether in this country or overseas.

Extremism is defined by the Crown Prosecution Service as:

The demonstration of unacceptable behaviour by using any means or medium to express views which:

- Encourage, justify or glorify terrorist violence in furtherance of particular beliefs;
- Seek to provoke others to terrorist acts;
- Encourage other serious criminal activity or seek to provoke others to serious criminal acts; or
- Foster hatred which might lead to inter-community violence in the UK.

There is no such thing as a “typical extremist”: those who become involved in extremist actions come from a range of backgrounds and experiences, and most individuals, even those who hold radical views, do not become involved in violent extremist activity.

Pupils may become susceptible to radicalisation through a range of social, personal and environmental factors - it is known that violent extremists exploit vulnerabilities in individuals to drive a wedge between them and their families and communities. It is vital that school staff are able to recognise those vulnerabilities.

Indicators of vulnerability include:

- Identity Crisis – the student / pupil is distanced from their cultural / religious heritage and experiences discomfort about their place in society;
- Personal Crisis – the student / pupil may be experiencing family tensions; a sense of isolation; and low self-esteem; they may have dissociated from their existing friendship group and become involved with a new and different group of friends; they may be searching for answers to questions about identity, faith and belonging;
- Personal Circumstances – migration; local community tensions; and events affecting the student / pupil’s country or region of origin may contribute to a sense of grievance that is triggered by personal experience of racism or discrimination or aspects of Government policy;
- Unmet Aspirations – the student / pupil may have perceptions of injustice; a feeling of failure; rejection of civic life;
- Experiences of Criminality – which may include involvement with criminal groups, imprisonment, and poor resettlement / reintegration;

- Special Educational Need – students / pupils may experience difficulties with social interaction, empathy with others, understanding the consequences of their actions and awareness of the motivations of others.

However, this list is not exhaustive, nor does it mean that all young people experiencing the above are at risk of radicalisation for the purposes of violent extremism.

More critical risk factors could include:

- Being in contact with extremist recruiters;
- Accessing violent extremist websites, especially those with a social networking element;
- Possessing or accessing violent extremist literature;
- Using extremist narratives and a global ideology to explain personal disadvantage;
- Justifying the use of violence to solve societal issues;
- Joining or seeking to join extremist organisations; and
- Significant changes to appearance and / or behaviour;
- Experiencing a high level of social isolation resulting in issues of identity crisis and / or personal crisis.

## Appendix 2

### ROLES AND RESPONSIBILITIES OF THE SINGLE POINT OF CONTACT (SPOC)

The SPOC for Cornerstone Academy Trust is Jonathan Bishop, who is responsible for:

- Ensuring that staff of the school are aware that you are the SPOC in relation to protecting students/pupils from radicalisation and involvement in terrorism;
- Maintaining and applying a good understanding of the relevant guidance in relation to preventing students/pupils from becoming involved in terrorism, and protecting them from radicalisation by those who support terrorism or forms of extremism which lead to terrorism;
- Raising awareness about the role and responsibilities of Cornerstone Academy Trust in relation to protecting students/pupils from radicalisation and involvement in terrorism;
- Monitoring the effect in practice of the trust's RE curriculum and assembly policy to ensure that they are used to promote community cohesion and tolerance of different faiths and beliefs;
- Raising awareness within the school about the safeguarding processes relating to protecting students/pupils from radicalisation and involvement in terrorism;
- Acting as the first point of contact within the school for case discussions relating to students who may be at risk of radicalisation or involved in terrorism;
- Collating relevant information from in relation to referrals of vulnerable students / pupils into the Channel\* process;
- attending Channel\* meetings as necessary and carrying out any actions as agreed;
- Reporting progress on actions to the Channel\* Co-ordinator; and
- Sharing any relevant additional information in a timely manner.

Channel is a multi-agency approach to provide support to individuals who are at risk of being drawn into terrorist related activity. It is led by the Devon and Cornwall Police Counter-Terrorism Unit, and it aims to

- Establish an effective multi-agency referral and intervention process to identify vulnerable individuals;
- Safeguard individuals who might be vulnerable to being radicalised, so that they are not at risk of being drawn into terrorist-related activity; and
- Provide early intervention to protect and divert people away from the risks they face and reduce vulnerability.

## Appendix 3

### WHAT WE DO WHEN WE ARE CONCERNED

Where risk factors are present but there is no evidence of a particular risk then our DSL /SPOC advises us on preventative work that can be done within school to engage the pupil into mainstream activities and social groups. The DSL may well be the person who talks to and has conversations with the pupil/student's family, sharing the trust's concern about the young person's vulnerability and how the family and school can work together to reduce the risk.

In this situation, depending on how worried we are and what we agree with the parent and the young person (as far as possible) –

- The DSL/SPOC can decide to notify the Multi-Agency Safeguarding Hub (MASH) of the decision so that a strategic overview can be maintained, and any themes or common factors can be recognised; and
- The school will review the situation after taking appropriate action to address the concerns.

The DSL/SPOC will also offer and seek advice about undertaking an early help assessment such as the family Devon Assessment Framework (DAF) and/or making a referral to children's social care. The local family support and safeguarding hub can assist us.

If the concerns about the pupil/student are significant and meet the additional needs/complex need criteria, they will be referred to the MASH. This includes concerns about a child/young person who is affected by the behaviour of a parent or other adult in their household.

If deemed necessary, serious incidents will be discussed and referred to the Prevent Team at Devon and Cornwall Police.